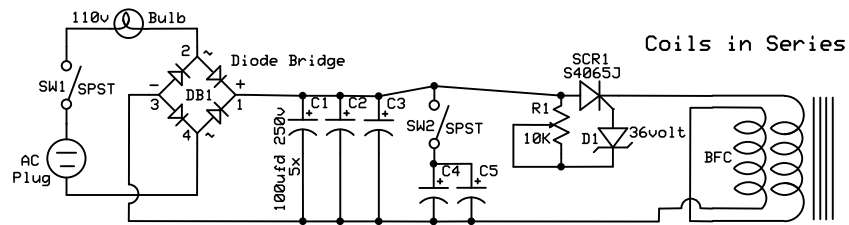
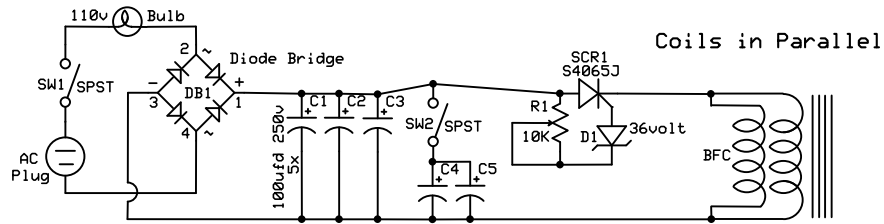


PEMF Bob Beck Phd Style

Connectd to the Bifilar MAGnetic Coil



NOTES:

SW2 is used to add power for larger coils. The PEMF is shown connected to the Bifilar MAGnetic Coil (BFC).

The MAG or (BFC) can be connected in two different ways. Further evaluation is needed to determine which connection type is more beneficial.

Bulb types must be incadescent and can range from 25 to 100 watts. 40 to 60 watts are optimal and recommended.

AURORASKY		
PEMF Bob Beck Phd Style		
G Steven Kempe	Rev 1.0 8/16/2016	Page 1 of 1